

FIXED PRICE

Home and Land Package



Classic Plus Facade

Horningsea Park

Suits 10 x 35m lot, Proposed Road,
Horningsea Park NSW 2171

Expected Rego Date: February 2025

\$504,900

Land Size: 350m²

House Price ONLY

Mint 24

The Mint is a home built with practicality in mind. This home is an entertainerâ eating and entertaining areas downstairs, while the bedrooms are tucked away from the action upstairs. This home design offers many clever design features in one undeniably stylish and spacious floor plan.

4
 2
 1
 191.33m²

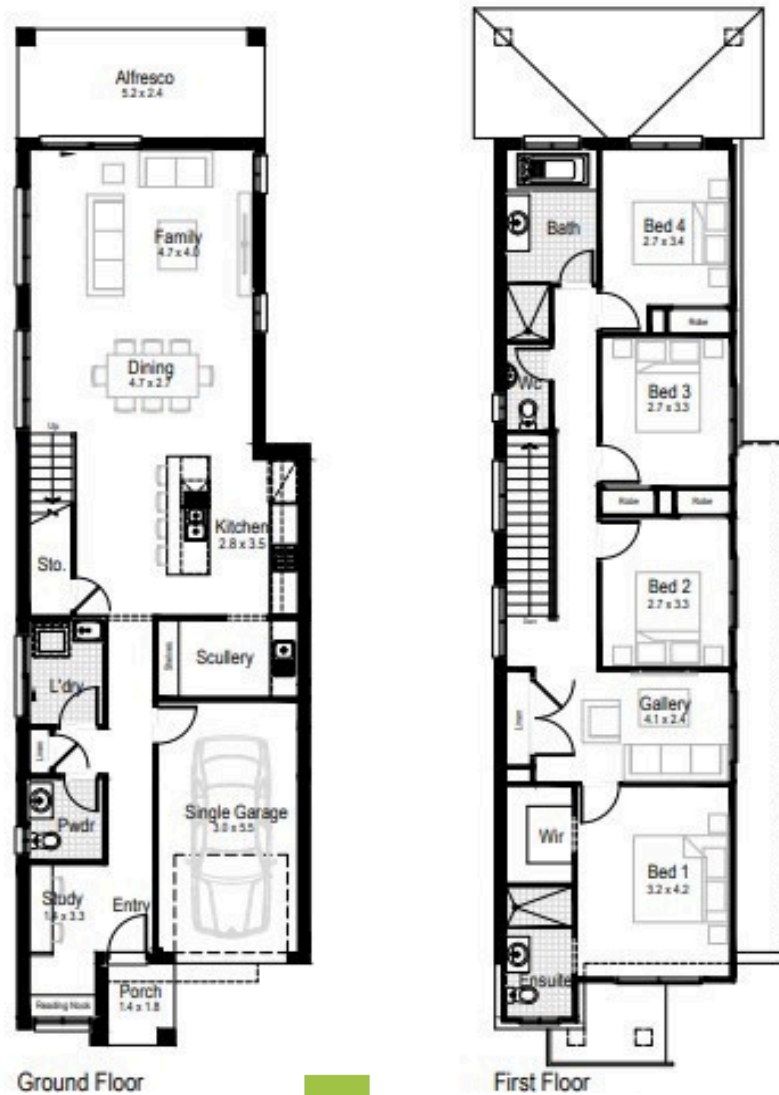
+ IP: Investment Inclusions Package
 LP: Landscape Package

Living Area	157.65m ²	Porch	2.41m ²
Garage	18.63m ²		
Alfresco	12.64m ²		



Our Guarantees

At Hudson Homes we understand the importance of time and money. And since delivering upon our promised to you is at the heart of everything we do, every customer is offered a peace-of-mind and security with our guarantee and our time frame guarantee.



IP

IP: Investor Inclusions Package

LP

LP: Landscape Package

- Ducted air conditioning throughout
- LED downlights throughout
- Automatic garage door with 2 remotes
- Fully-finished tiled outdoor alfresco
- Roller blinds, flyscreens and keyed locks throughout
- Fully-lined kitchen cabinetry with overhead cupboards and bulkhead
- Kitchen 20mm stone benchtop with large sink
- 600mm stainless steel gas cooktop and recirculating pull-out rangehood

- Stainless steel 600mm electric oven
- Stainless steel dishwasher, installed into kitchen cabinets
- Contemporary floating-style vanities, mirrors and accessories to all bathrooms
- 1650mm bathtub as indicated in floorplan
- Ceramic tiles to bathroom, ensuite and laundry
- Ceramic tiles to entry, family, kitchen, meals areas, alfresco and patio
- Carpet to bedrooms and all other internal areas

- Quality paint system to ceilings and walls
- NBN provision
- Finished driveway with path
- Lawn turf to front and back yard
- Front garden bed with Australian native shrubs and edging
- Fencing to suit covenant/estate requirements
- Colorbond Letterbox
- Outdoor slimline single-fold clothesline
- House numbers

ENQUIRE NOW

Trevor LeBreton 0438 872 448

enquiries@hudsonhomes.com.au



Our Guarantees

At Hudson Homes we understand the importance of time and money. And since delivering upon our promises to you is at the heart of everything we do, every customer is offered the peace-of-mind and security with our 'fixed price guarantee' and our 'time-frame guarantee'.

Terms and conditions apply. Images are indicative only. Floor plans based on Classic facade and will adjust for alternatives. Standard included site costs are for a cleared residential site up to 450m2, with up to 1 metre fall across the building platform, M class slab and with all services available at site boundaries (excludes bottle-axe and rural sites). Home and Land packages are subject to developer design and statutory authorities' approval. Additional allowances may be required for an individual lots or housing estates. Package pricing does not include stamp duty, legal fees or other costs that may be incurred with the purchase of land. Photographs and other images used within marketing material may show fixtures, fittings or finishes which are not supplied by Hudson Homes, or which are only available in some designs or when selected as additional upgrades. Please speak to a Hudson Homes New Home Consultant who is able to provide a building contract that specifically outlines the fixtures, finishes and features that you will receive, and selections from the builder's standard range. Hudson Homes agrees to complete construction of the home on time as specified in the signed HIA agreement (subject to any inclement weather, holiday period closure or other permissible time extensions that are beyond our control). Hudson Homes reserves the right to alter any advertised price without notice. Other promotional offers by Hudson Homes are not applicable unless specified. All plans and images are copyright of Hudson Homes Pty Ltd ABN 92 623 431 685, Builders Lic: 15078318