







# Ivory

*i-vor-y*: a hard, white dentine material derived from the tusks and teeth of animals and used in both art and manufacturing.

The Ivory offers a stunning, contemporary design for the growing family. With large, broad living and entertaining spaces around a central family hub, this home caters to the individual needs of each member of the family.

## PERFECT FOR

---

-  **First home buyers**
-  **Knock-Down, Rebuild**
-  **Entertainers**
-  **Growing families**
-  **Home theatre option**
-  **Home office option**
-  **Scullery included**





# Facades



Aspen



Avoca



Bayside



Classic



Contemporary



Eden



Executive



Hillsdale



Majestic



Riviera



Savoy



Serenity

## Other compatible facades

Avalon - 26 only  
Banksia  
Breeze  
Chateaux - 26 only

Coastal  
Crest  
Elite  
Hamptons

Harmony  
Infinity  
Pavilion  
Sovereign - 26 only

Statesman - 26 only

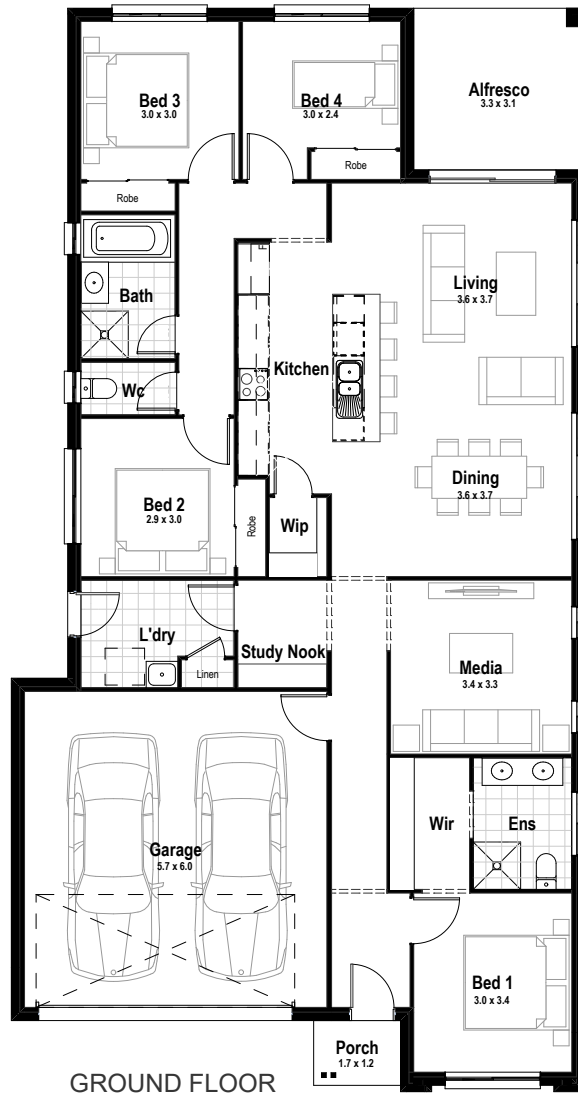
13.23 m

MINIMUM LOT WIDTH

STCC (Subject to Council Conditions)

# Ivory 21

4 2 1



Living area  
167.37 m<sup>2</sup>



Garage  
37.70 m<sup>2</sup>



Alfresco  
9.98 m<sup>2</sup>



Porch  
2.03 m<sup>2</sup>



Overall width  
10.89 m



Overall length  
20.57 m



Total area  
202.17 m<sup>2</sup>

13.23 m

MINIMUM LOT WIDTH

STCC (Subject to Council Conditions)

# Ivory 23



Option  
Add study nook and linen



Living area  
167.37 m<sup>2</sup>



Garage  
33.70 m<sup>2</sup>



Alfresco  
7.26 m<sup>2</sup>



Porch  
3.18 m<sup>2</sup>



Overall width  
11.39 m



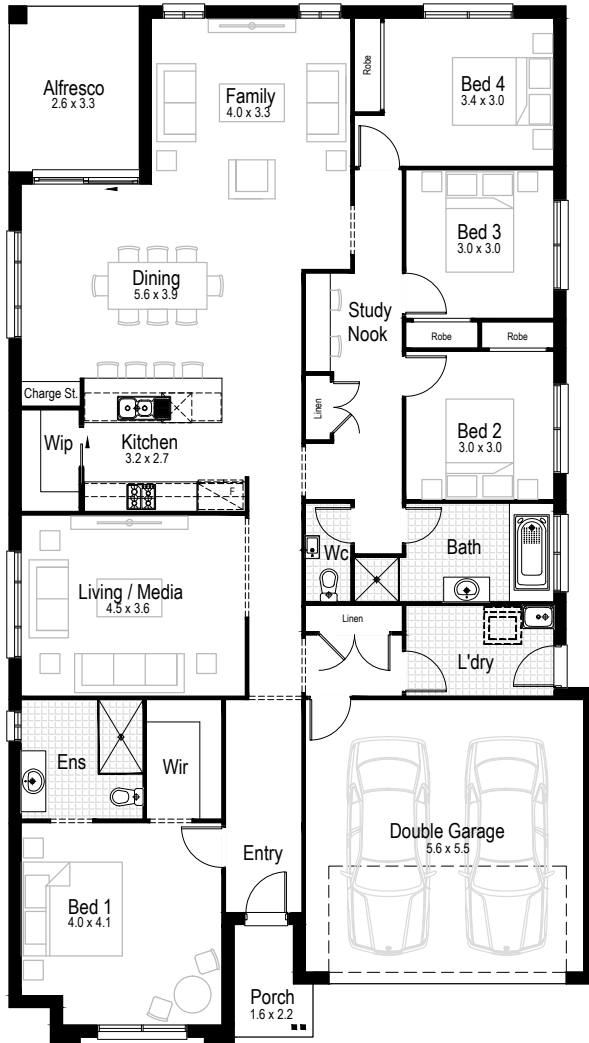
Overall length  
20.99 m



Total area  
211.51 m<sup>2</sup>

# Ivory 25

 4    
  2    
  2



**Living area**  
 186.69 m<sup>2</sup>



**Garage**  
 34.16 m<sup>2</sup>



**Alfresco**  
 8.87 m<sup>2</sup>



**Porch**  
 3.18 m<sup>2</sup>



**Overall width**  
 11.87 m



**Overall length**  
 20.99 m



**Total area**  
 232.90 m<sup>2</sup>

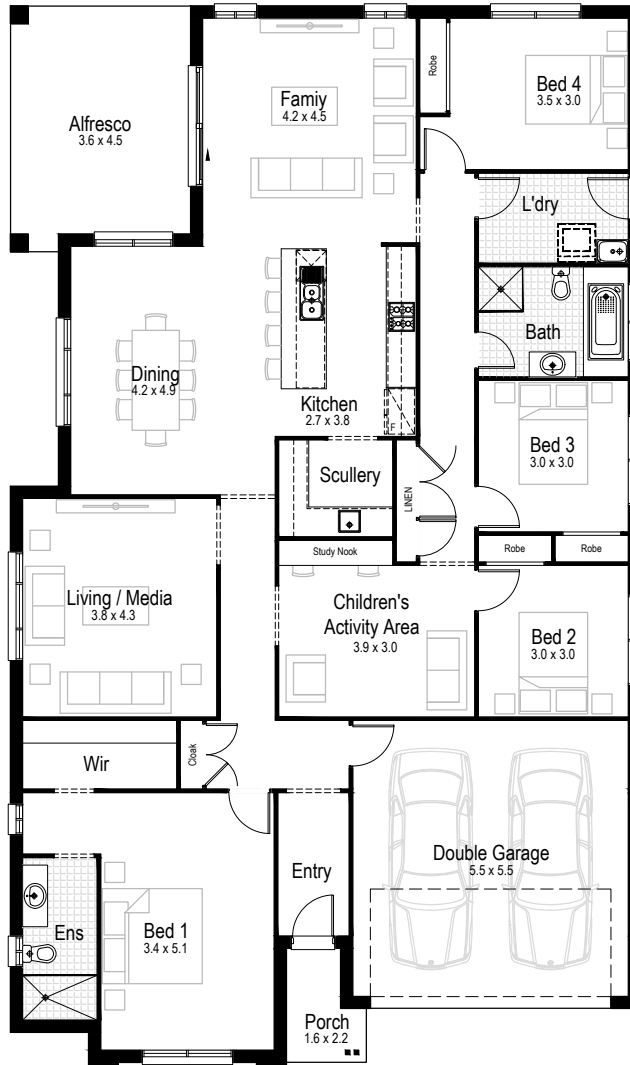
14.43 m

MINIMUM LOT WIDTH

STCC (Subject to Council Conditions)

# Ivory 27

4 2 2



Living area  
201.42 m<sup>2</sup>



Garage  
33.35 m<sup>2</sup>



Alfresco  
16.75 m<sup>2</sup>



Porch  
3.04 m<sup>2</sup>



Overall width  
12.59 m



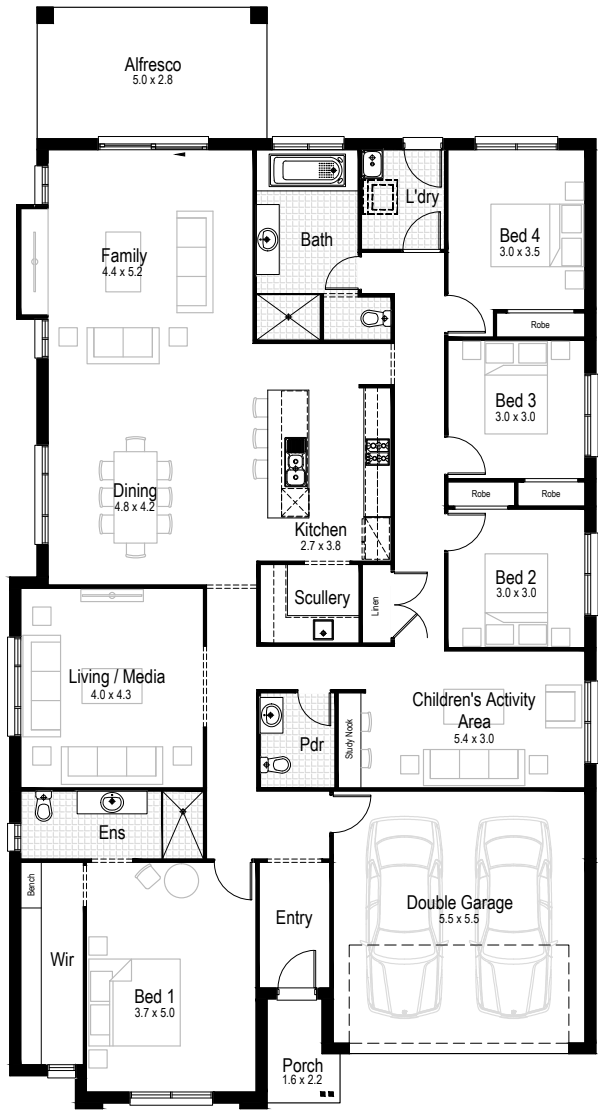
Overall length  
21.23 m



Total area  
254.56 m<sup>2</sup>

# Ivory 29

 4    
  2.5    
  2



-   
**Living area**  
 222.90 m<sup>2</sup>
-   
**Garage**  
 33.35 m<sup>2</sup>
-   
**Alfresco**  
 14.49 m<sup>2</sup>
-   
**Porch**  
 3.18 m<sup>2</sup>
-   
**Overall width**  
 12.83 m
-   
**Overall length**  
 24.11 m
-   
**Total area**  
 273.92 m<sup>2</sup>



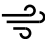





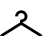

# COMPLETE YOUR DREAM HOME

SELECT AN INCLUSIONS PACKAGE TO SUIT YOUR STYLE AND BUDGET



## WE CALL THEM NECESSITIES. **NOT UPGRADES**

When our team created our range of inclusions packages, we decided to select items that you will need at every stage of your life. That's why our standard inclusions packages include:

- |   |   |
|---|---|
|  <b>Air Conditioning</b>                           |  <b>Automatic Garage Door</b>              |
|  <b>Tiled Outdoor Alfresco</b>                     |  <b>Site Costs for Standard Lot*</b>       |
|  <b>Carpet and Tiles Throughout</b>                |  <b>Quality Stainless Steel Appliances</b> |
|  <b>Built-in Robes with Mirrored Sliding Doors</b> |  <b>PLUS SO MUCH MORE</b>                  |

Pick up a brochure or visit [hudsonhomes.com.au](https://www.hudsonhomes.com.au)

\*Site costs for a standard, cleared block with up to 1m fall across the building platform and up to M class slab





**hudsonhomes.com.au**

1300 246 700

Let's be friends

