

Eton

e-ton: name after Eton College in the United Kingdom, this green-blue tone has been used since the early 19th Century on the uniforms of Eton sportsmen to identify them, whether on the river or on the polo field.

The Eton has been designed with a variety of lifestyles in mind, from the young family to downsizing retirees. iDeal for smaller blocks, this clever floor plan delivers all the essential luxuries into one efficient home. With a generous living area sheltered to the rear of the home, this design offers a sense of spaciousness that continues through to the oversized alfresco.

PERFECT FOR

-  Narrow block
-  First home buyers
-  Entertainers
-  Downsizers
-  Investors



Facades



Classic



Avoca



Banksia



Bayside



Breeze



Contemporary



Crest



Eden



Executive



Harmony



Infinity



Majestic



Riviera



Savoy



Serenity

Other compatible facades

Aspen
Chateaux - 17 only
Coastal
Elite

Hamptons
Hillsdale
Pavilion
Sovereign - 17 only

Stateman - 17 only

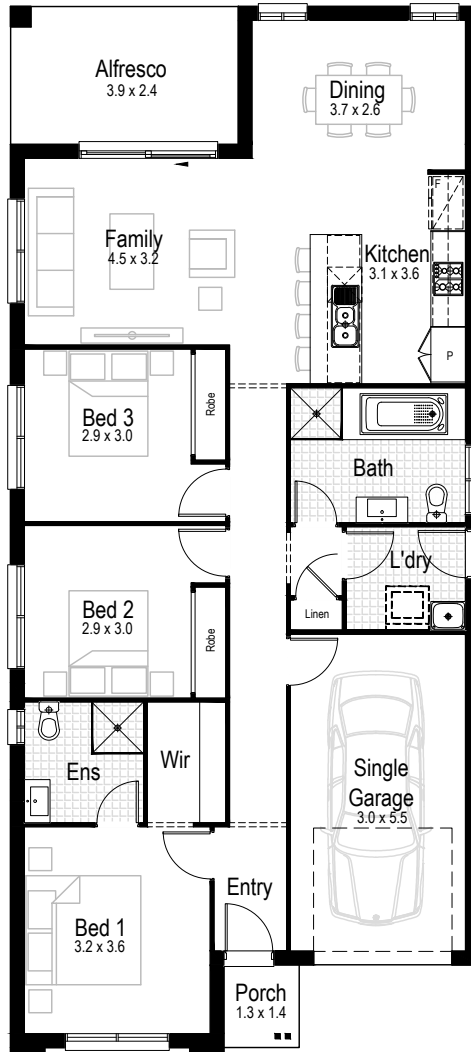
9.99 m

MINIMUM LOT WIDTH

STCC (Subject to Council Conditions)

Eton 15

3 2 1



Living area
112.98m²



Garage
18.86 m²



Alfresco
9.50 m²



Porch
1.89 m²



Overall width
8.15 m



Overall length
18.23 m



Total area
143.23 m²

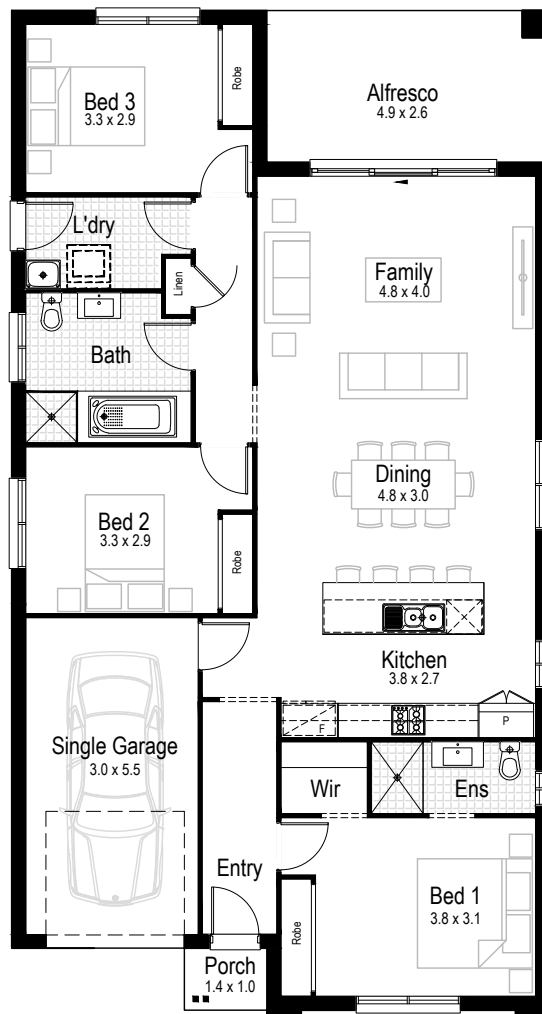
11.19 m

MINIMUM LOT WIDTH

STCC (Subject to Council Conditions)

Eton 17

3 2 1



Living area
126.32 m²



Garage
18.63 m²



Alfresco
12.99 m²



Porch
1.55 m²



Overall width
9.35 m



Overall length
17.39 m



Total area
159.49 m²

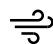







COMPLETE YOUR DREAM HOME

SELECT AN INCLUSIONS PACKAGE
TO SUIT YOUR STYLE AND BUDGET



WE CALL THEM NECESSITIES. **NOT UPGRADES**

When our team created our range of inclusions packages, we decided to select items that you will need at every stage of your life. That's why our standard inclusions packages include:

- | | |
|---|--|
|  Air Conditioning |  Automatic Garage Door |
|  Tiled Outdoor Alfresco |  Site Costs for Standard Lot* |
|  Carpet and Tiles Throughout |  Westinghouse Stainless Steel Appliances |
|  Built-in Robes with Mirrored Sliding Doors |  PLUS SO MUCH MORE |



Pick up a brochure or visit [hudsonhomes.com.au](https://www.hudsonhomes.com.au)

*Site costs for a standard, cleared block with up to 1m fall across the building platform and up to M class slab



hudsonhomes.com.au

1300 246 700

Let's be friends

